



# H8c **2K**

## Pan & Tilt Wi-Fi Camera

### 360-degree flexibility, all-around protection

The H8c 2K is smart, steady, and simple enough to serve as a reliable outdoor camera. Delivering a whole-area view in 2K resolution, the camera offers 24/7 protection with easy controls and two-way communication. Thanks to the added smarts of person detection and auto-tracking, nothing will get out of your sight easily.



2K Resolution



360° Panoramic Coverage



Color Night Vision



AI-Powered Human Shape Detection



Auto-Tracking



One-Click Return to Pre-Set Directions



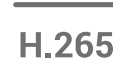
Weatherproof Design



Active Defense with Siren and Strobe Light



Two-Way Talk



H.265 Video Technology



Smart Integration with Google Assistant & Amazon Alexa<sup>1</sup>



Supports MicroSD Card (Up to 512 GB) & EZVIZ CloudPlay Storage<sup>2</sup>



# 360° vision in 2K, means no grey areas in protection

Bye-bye to a narrow field of view or blurry images. The H8c 2K pans and tilts to take in information from all directions in 2K resolution, so you can see the big picture of your protected area without missing the small details.



**360° View**

**350°**  
Horizontal

**80°**  
Vertical



## Detect and track the crucial moments

The H8c 2K distinguishes people from pets or insignificant moving objects. When human activity gets detected, the camera will lock on the target and automatically rotate to follow the movement. Nothing will easily escape your attention.



AI-Powered Human Shape Detection



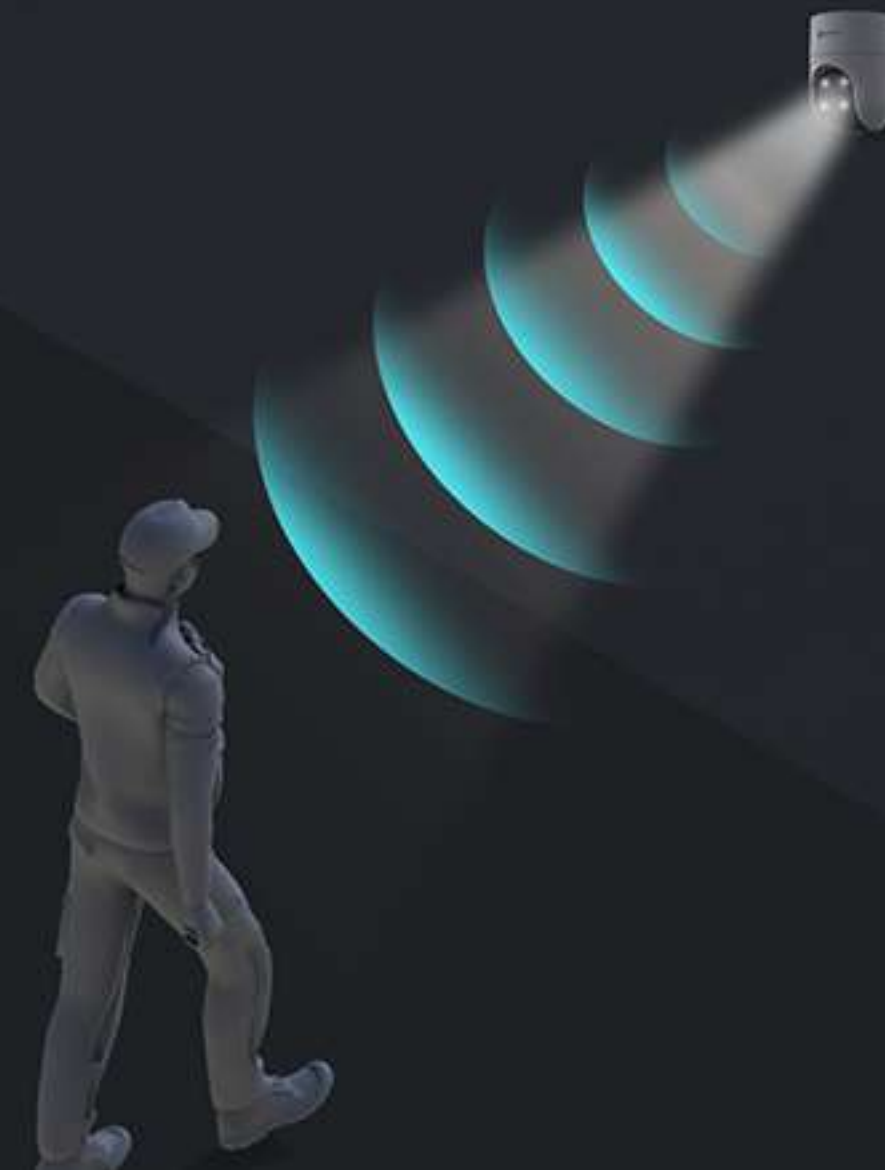
Human Motion Auto-Tracking



No Subscription Fee

## A vigilant guard who works around the clock

The camera features the active defense function to provide an extra layer of protection. Upon detection of intruders, the camera will set off a loud siren and flash two dazzling spotlights<sup>3</sup> to let uninvited visitors know they have been detected.



## Pin down the spots that matter to you most

No matter how complicated the tracking is, the camera always knows its way back to your preferred viewing angle. You can pinpoint up to 12 angles via the EZVIZ App. Just click on your pre-set dots and the camera will automatically resume its place.



Front Door



Front Yard



Garage



*How can I help you?*

*You have a delivery*

## Hear and speak with visitors as if you were there

With the H8c 2K, you can simply use your smartphone to hear and speak to a deliveryman, greet guests, or ask strangers to leave your property – even if you're not home.

# Designed to make protection last all night

## 01 Impressive, far-reaching night vision

The camera ensures that no one sneaks in under the cover of darkness. It helps you see far enough to know what's going on around your home.



## 02 Three useful Night Vision Modes will suit any need

- **Full-color night vision**

Turn on the two built-in spotlights at night so you can enjoy a vivid color imaging with extra lighting to keep your home safer.

- **Black-and-white night vision**

If you don't want the lighting to disturb your neighbors, just go with the infrared night vision by changing on the EZVIZ App.

- **Smart night vision**

Or, let the camera decide. In smart mode, the camera will automatically light up the environment upon detection of human motion.



**Color Night Vision**



**Black-and-White Night Vision**



## Elegant design with reliable Wi-Fi connection

---

Compact in design to go under the eaves or on an exterior wall, the H8c 2K comes equipped with high-performance, built-in dual antennas to ensure stable, strong camera connection.

## Sturdy and durable for everyday use

---

EZVIZ designed the H8c 2K to bring simple, long-lasting, and worry-free protection to every family. Its weatherproof enclosure stands strong even in harsh weather.





## Detachable mount plate makes installation easy

---

The H8c 2K facilitates the setup process. Its mounting base can be detached from the camera body to get installed first, eliminating the need to hold the whole camera in place while you search for the best installation spot.



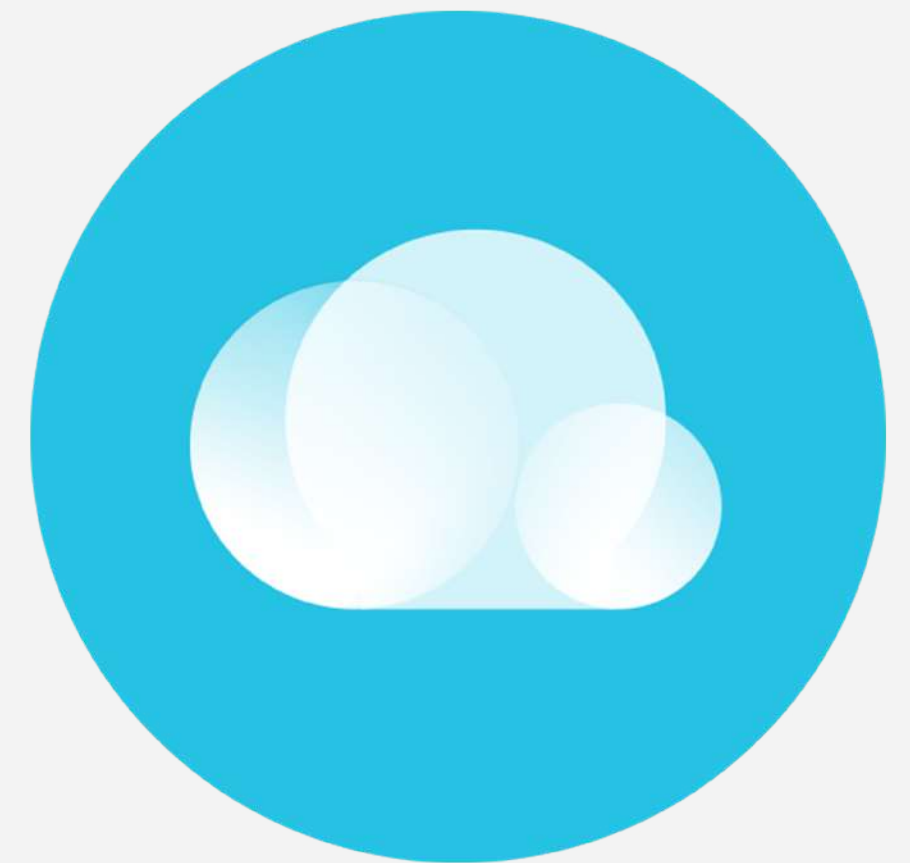
## Extra-Large, safe storage options that you can trust

---

You can secure your recorded videos on a local microSD card of up to 512 GB, or subscribe to EZVIZ CloudPlay for fully-encrypted cloud storage<sup>2</sup>.



Supports microSD Card



Supports EZVIZ CloudPlay Storage

## Enhanced viewing pleasure with smaller video files

Compared to the prevailing H.264 video compression technology, H.265 creates a more fluid viewing experience with recorded videos. Meanwhile, you won't have to worry about large video files taking up too much of your storage space – H.265 technology reduces their sizes by up to 50%<sup>4</sup>.

**50%** ↓  
Video Storage Space

**50%** ↓  
Required Bandwidth



## We do our best to protect data and privacy



EZVIZ has been awarded by DNV for **information security** (ISO/IEC 27001:2013), **personal data protection** (ISO/IEC 27701:2019), **cloud security** (CSA STAR) and more.





1 Google Assistant is not available in some languages and countries.

2 A local storage card must be purchased separately. Cloud storage service is only available in certain markets. Please verify the availability before making any purchase.

3 The spotlights will not flash when the color night vision mode is enabled.

4 Data from EZVIZ Lab's test results under standard conditions. The video compression efficiency will vary with the frequency and complexity of the activity captured, and other environmental factors

# Specifications Model CS-H8c (2K)

## Camera

|                       |   |
|-----------------------|---|
| Image Sensor          | 1/2.8" Progressive Scan CMOS  |
| Shutter Speed         | Self-adaptive shutter   |
| Lens                  | 4mm@ F1.6, viewing angle: 46° (Vertical), 89° (Horizontal), 104° (Diagonal)<br>6mm@ F1.6, viewing angle: 28° (Vertical), 52° (Horizontal), 60° (Diagonal) |
| PT Angle              | Pan: 350°, Tilt: 80°  |
| Minimum Illumination  | 0.5 Lux @ (F1.6, AGC ON), 0 Lux with IR<br>(Data is obtained from EZVIZ laboratories)   |
| Lens Mount            | M12   |
| Day & Night           | IR-Cut filter with auto-switching   |
| DNR                   | 3D DNR  |
| WDR                   | Digital WDR   |
| Night Vision Distance | 30 m / 98 ft  |

## Video & Audio

|                   |  |
|-------------------|--|
| Max. Resolution   | 2304 × 1296  |
| Frame Rate        | Max: 30fps; Self-Adaptive during network transmission  |
| Video Compression | H.265 / H.264  |
| H.265 Type        | Main Profile   |
| Video Bit Rate    | Quad HD; Full HD; Hi-Def; Standard. Adaptive bit rate. |
| Audio Bit Rate    | Self-Adaptive  |
| Max. Bitrate      | 3 Mbps   |

## Network

|                    |  |
|--------------------|--|
| Wi-Fi Standard     | IEEE802.11b, 802.11g, 802.11n                |
| Frequency Range    | 2.4 GHz ~ 2.4835 GHz                         |
| Channel Bandwidth  | Supports 20 MHz                              |
| Transmission Rate  | 11b: 11 Mbps, 11g: 54 Mbps, 11n: 72 Mbps     |
| Wi-Fi Pairing      | AP pairing                                   |
| Protocol           | EZVIZ Cloud Proprietary Protocol             |
| Interface Protocol | EZVIZ Cloud Proprietary Protocol             |
| Wired Network      | RJ45 × 1 (10M / 100M Adaptive Ethernet Port) |

## Storage

|               |   |
|---------------|---|
| Local Storage | MicroSD card slot (Up to 512GB)             |
| Cloud Storage | EZVIZ Cloud Storage (Subscription Required) |

## Function

|                       |   |
|-----------------------|---|
| Smart Alarm           | AI-Powered Human Shape Detection                                      |
| Customized Alert Area | Supports  |
| Two-way Talk          | Supports  |
| General Function      | Anti-Flicker, Dual-Stream, Heart Beat, Password Protection, Watermark |
| Preset Locations      | Supports  |

# Specifications Model CS-H8c (2K)

## General

|                       |  |
|-----------------------|--|
| Operating Conditions  | -30 °C to 50°C ( -22 °F to 122 °F ), humidity 95% or less (non-condensing) |
| IP Grade              | Weatherproof Design  |
| Power Supply          | DC 12V / 1A  |
| Power Consumption     | MAX. 12W   |
| Dimensions            | 100.05 × 129.19 × 149.75 mm (3.94 × 5.09 × 5.9 inch)                       |
| Packaging Dimensions  | 140 × 140 × 192 mm (5.51 × 5.51 × 7.56 inch)                               |
| Weight (With package) | 745 g (26.28 oz) For EU Standard Version                                   |
| Net Weight            | 435 g (15.34 oz)   |

## In the box

- H8c 2K Camera
- Drill Template
- Screw Kit
- Waterproof Kit
- Power Adapter
- Regulatory Information
- Quick Start Guide

## Certifications:

CE / FCC / UKCA / UL / WEEE / RoHS / REACH

Specifications are subject to change without notice. "🌈", "EZVIZ" and other trademarks and logos are the properties of EZVIZ in various jurisdictions.